

The Arctic

2024/25 ULTRA-LUXURY VOYAGES



The Arctic: Don't just go there. Know there.

Unlock this remote region with our peerless polar expertise

Since we pioneered luxury expedition voyages in 2008, Silversea has been perfecting the experience. Today, we invite you to explore the extraordinary wilderness of the Arctic with our unparalleled knowledge and expertise – enabling you to venture deeper into the heart of this stunningly remote region to reveal its fragile beauty.

Accompanied by experts in marine biology, geology, wildlife, history and more, your travels will be enriched at every turn while your butler ensures you always

return from the day's discoveries feeling pampered and prepared for the next. Our intimate ice-class ships are small enough to go where others can't, yet spacious enough to make your expedition feel personal. Whether trekking across the tundra in the footsteps of great explorers, skipping over icy waters in a Zodiac®, encountering indigenous wildlife in their incredible habitat or immersing yourself in local culture, you'll know it's a journey of a lifetime to see the Arctic but it's an experience that can only truly be unlocked with Silversea.



Guests onboard a Zodiac, Albert I Land, Svalbard

The Silversea difference

THE ULTIMATE WAY TO EXPERIENCE THE ARCTIC

Let us immerse you in true ultra-luxury from the second you leave home. From private executive transfers to and from the airport to Business Class upgrades, our door-to-door service leaves you free to enjoy relaxing travel all the way to the Arctic.

PEERLESS POLAR EXPERTISE

Thanks to our wealth of knowledge acquired over 15 years of exploring the Arctic, and the expertise of our seasoned experts, our expeditions open the doors to the polar realm like no one else on Earth, in ultimate safety and comfort.



PERSONALISED EXPEDITION EXPERIENCE

With the highest expert-to-guest ratio in the industry, we offer personalised enrichment experiences onboard and ashore to make the most of every moment. From more in-depth lectures to more Zodiacs and kayaks per guest, Silversea takes your curiosity to the limit.



VAST ARCTIC ACCESS

Our teams have scouted new destinations and gateways for you, to unlock the wonders of the Arctic realm in a way unseen before. Our nimble ice-class ships access areas of the Arctic others simply can't reach, opening more polar possibilities along your adventure.



INTIMATE SHIPS, UNRIVALLED SERVICE

Intimate yet spacious, our expedition ships accommodate only 200 to 274 guests to ensure you experience the highest level of personal service. Together with the finest dining at sea, that means that however far you are from home you never compromise on luxury.



A SEAMLESS JOURNEY, FROM DOOR TO EXPLORE

No matter how remote your destination, Silversea curates every single aspect of your journey to the very highest standards, from private flights to hotel stays, transfers and more, enabling you to arrive at your destination feeling rested and ready to explore.



Take your adventure further with our expedition experts

No other luxury travel matches our destination knowledge

A voyage to such a remote and rarely visited region as the Arctic is a true expedition: a thrilling, wild, and unpredictable adventure. That's why you need the right guides to unlock the incredible experiences here. And that's why we've assembled the finest team of experts in expedition travel to help you explore all of the Arctic's hidden secrets – from its awe-inspiring wildlife to its jaw-dropping landscapes. Featuring one of the highest expedition-personnel-to-guest ratios at sea, with up to 28 specialists on every voyage, we make your exploration unique. Each of our

highly experienced specialists is chosen for their passion, deep knowledge and dedication to their field, as well as for their openness, friendliness, and sheer enthusiasm. Carefully chosen to match your destinations, they include historians, biologists, ornithologists, geologists, photographers and more to ensure your every experience is remarkable. Whether you need that perfect photo setting or want to know the name of that bird staring at you from an outcrop, you'll always find the answer. We can't wait to share this region's legendary stories with you, onboard, on land and on ice.



Silver Endeavour and a Zodiac in Evighed Fjord, Greenland

GET CLOSER TO THE ARCTIC BY ZODIAC®

There is simply no other experience to match hearing huge chunks of ice break away from an ancient glacier as you skim over frigid waters safely in a Zodiac. And there are no other sights to match witnessing a magnificent humpback whale as it spy-hops vertically out of the crystal clear water to introduce itself. Our Expedition Team members will get you up close to the action; all you have to do is step onboard.



TAKE A WALK ON THE WILD SIDE

Experience the extraordinary with an Arctic hiking expedition. Immerse yourself in the untouched beauty of remote fjords, hiking through pristine landscapes to unveil incredible vistas. You'll also engage with the heartwarming charm of local communities, forging unforgettable connections with the region's rich culture. As you lace up your boots, get ready for a journey where every step tells a story and prepare for an adventure that goes beyond exploration.



CAPTIVATE YOUR SENSES IN A KAYAK

The Arctic's towering, blue-green icebergs and the sight of a huge humpback whale breaching the water's surface look amazing from afar, but there's nothing like floating alongside the immensity of a glacier in total silence or having a curious seal glide right beside you in the water. Under the guidance of certified kayak instructors, you'll be able to experience all this and so much more as you visit the seas, bays and inlets of the Arctic first hand.



UNDERSTAND THE ARCTIC MORE DEEPLY WITH FASCINATING LECTURES

To help you get the most from your onshore excursions, we've recruited some of the very best of the world's experts, from naturalists and biologists to historians and geologists, to provide you with fascinating insights on what to expect ashore and across the water. They'll pique your curiosity with captivating details about the land, water, ice and wildlife of the Arctic, and quench your thirst for exploration knowledge with their enthusiasm every time.



2024 Expedition Team Spotlight

BERNARDO ALPS – ORNITHOLOGIST AND MARINE BIOLOGIST

Bernardo is the Adjunct Research Scientist at the Cabrillo Marine Aquarium in San Pedro and a member of the West Coast Large Whale Entanglement Team. His formal education was in journalism before transitioning to the fields of seabird and marine mammal research. His love of exploring faraway places and the wonders of discovery and adventure has led him to Silversea.

ANDREW WEBB – WILDLIFE GUIDE

Andy is a Zoology graduate from Durham University who worked as a seabird ecologist for the UK Government to survey the distribution and abundance of seabirds around north and west Scotland. Andy now works for Silversea as a wildlife guide and ornithology lecturer in the South Atlantic and Antarctica and in north and west Scotland.

VICTORIA SALEM – HISTORY, CULTURE AND EXPLORATION LECTURER

Victoria has travelled extensively in Northern Europe, the Arctic and Antarctica for the past 21 years. She has worked with expedition voyages for 38 seasons at both ends of the Earth and many places in between; she has held several different positions within the expedition team, but her main role has been as a lecturer – on history, culture, and exploration.

ALEX (SASHA) FREL – HISTORIAN

Alex is a US and Czech national who graduated from Moscow State University with a Master's degree in Russian literature. Alex is an avid traveller with a keen interest in desert environments. He enjoys sailing, bird watching, visiting historical and archaeological sites, and working as a historian on Silversea expedition voyages all over the world.

LEA MCQUILLAN – EXPEDITION LEADER

Lea has an honours degree in Environmental Management, and has worked on various international research projects including coral reef habitat mapping on the second biggest barrier reef in Belize. Lea has travelled all over the world on expedition ships and is passionate about the marine environment and its natural biodiversity.

MILA LASSUY – ARCHAEOLOGIST

Mila has enjoyed and respected the outdoors well before she knew she could make it a career. During her time studying archaeology at the University of Oregon, she had the privilege to visit and conduct research on a variety of Pacific islands, including Rapa Nui (Easter Island), where she conducted her thesis research on small stone tools on that island.

HEDDA ANDERSEN – GLACIOLOGIST

Hedda was born and raised in the countryside outside Oslo, Norway and now lives on Svalbard in the Arctic. She graduated from the University Centre in Svalbard and University of Oslo with a Master's degree in Glaciology in 2024 after completing her undergraduate in Geology in 2021. Hedda is an experienced nature guide in the polar regions.

MICHAEL CALLAGHAN – POLAR EXPERT

Michael studied in Tourism at Concordia University and Outdoor Leadership at College Mérici in Quebec, Canada. He has over 20 years of experience in all polar regions, as well as the Caribbean, Alaska, and Mexico. Having Michael's easy-going style combined with his love of the natural world will help ensure that your expedition is unforgettable.

KEVIN MORGAN – WILDLIFE GUIDE

Kevin carries out wildlife surveys in the UK, has lead whale-watching trips since 1987 and has worked regularly on expedition cruise ships since 2004, completing over 240 voyages and 2,600 days of exploration. Over this time, he has observed most of the world's cetaceans and seabirds, with the knowledge of where to lookout for them – such as the "the drop off"!

KRISTIAN PEDERSEN – RESEARCHER

Kristian is an academic from the University of Edinburgh in Scotland whose in-depth research covers maritime adaptations in northern Europe from the Stone Age to the Viking Age. He has investigated the development of commercial fisheries and the whaling industry. Kristian is keen to give talks to Silversea guests and answer questions on archaeological subjects.

CHRIS HARBARD – ORNITHOLOGIST

Chris is a well-known British ornithologist and conservationist who lives in Cambridgeshire. After working for 24 years with the world's largest bird conservation organisation, the Royal Society for the Protection of Birds, Chris has been naturalist lecturer onboard ships for over six years in the Arctic, Antarctic, North Atlantic and North Pacific.

ALEXANDRA HANSEN – POLAR HISTORIAN & NATURALIST

Having graduated from Kenyon College in 2017 with a BA Degree in International Studies, Asian Studies, and China Area Studies, Alexandra focused her career on sharing her passion for the world's wild spaces. She has worked on all seven continents with our Expeditions and enjoys inspiring guests about nature and culture by Zodiac, on the ship, and ashore. She's certified as a Senior Polar Guide & Assessor and Wilderness First Responder, so you're in safe hands.



EXPEDITION
STAFF

SILVER SE

Welcome to our Expedition Ships

EXPERIENCE THE WORLD'S MOST LUXURIOUS SHIPS

Step into unprecedented levels of luxury in the heart of some of the most extreme destinations on our planet. Intimate yet spacious, our expedition ships accommodate only 220 to 274 guests to ensure you always experience the highest level of personal service. Explore even the harshest environments in utmost safety and comfort enjoying stunning venues onboard with speciality dining in a sophisticated atmosphere. Serving the finest dining at sea, we make sure that however far you are from home you never compromise on quality. And, of course, our famous 24/7 butler anticipates your needs and ensures your every wish is granted.



Silver Wind

GUESTS CAPACITY: 274

CREW CAPACITY: 239

LAST REFURBISHMENT: 2021

ICE CLASS: 1C

TOTAL EXPEDITION TEAM MEMBERS: **UP TO 28**

NUMBER OF ZODIACS: 20

KAYAK PROGRAMME: YES



Silver Endeavour

GUESTS CAPACITY: 220

CREW CAPACITY: 207

LAST REFURBISHMENT: 2021

ICE CLASS: PC6

TOTAL EXPEDITION TEAM MEMBERS: **UP TO 22**

NUMBER OF ZODIACS: 22

KAYAK PROGRAMME: YES



All-inclusive to the end of the world

YOUR ALL-INCLUSIVE JOURNEY STARTS FROM HOME

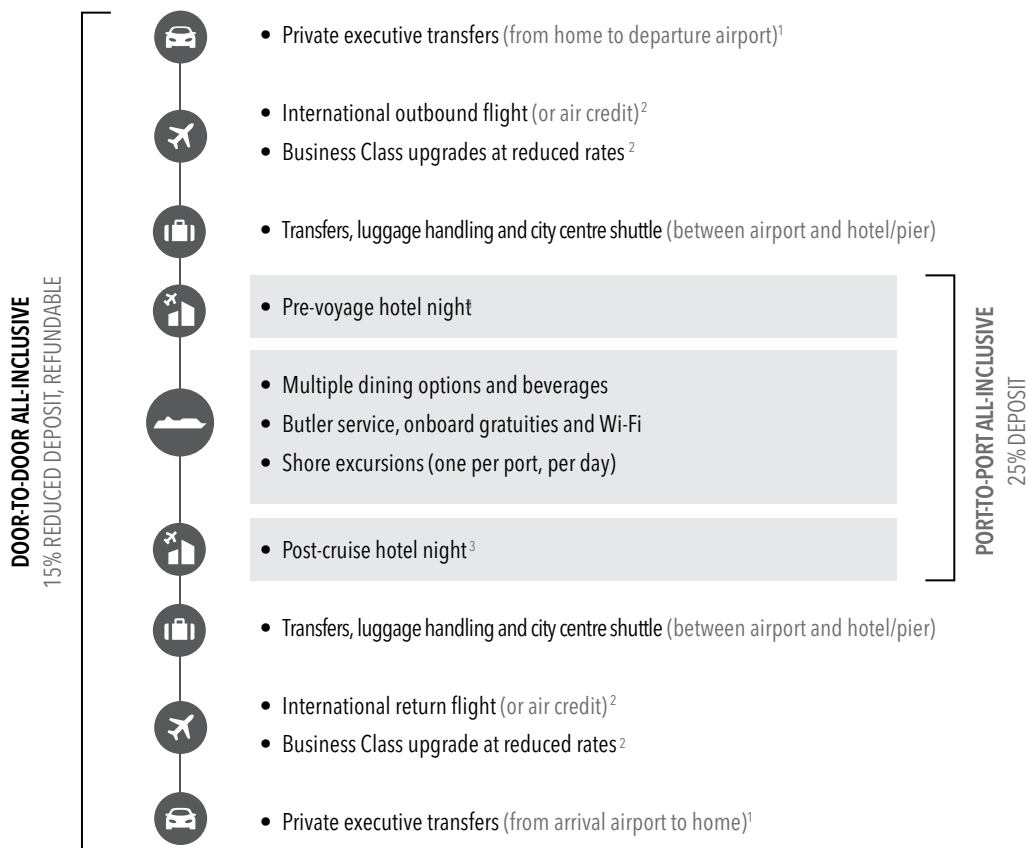
At Silversea, we're committed to making every aspect of your client's journey the best it can possibly be, enhancing their choices with two brand-new fare options:

DOOR-TO-DOOR ALL-INCLUSIVE

From international flights and all airport/hotel/ship transfers, including new private executive transfers from home to pre- and post-voyage hotel nights, shore excursions and more, our truly "door to explore" option ensures seamless travel and complete peace of mind knowing your clients are in our care every moment of their journey.

PORT-TO-PORT ALL-INCLUSIVE

Our Port-to-Port fare option is appealing to those who prefer to make their pre- and post-voyage travel arrangements independently. These fares offer flexibility without sacrificing luxury as your clients will enjoy all of Silversea's inclusive amenities and services once onboard.



¹ Applicable for distances of up to 50 miles (80 km). For longer distances, special tariffs apply. | ² Air is not available in all countries and to all destinations. Should the desired air not be available, a non-use credit will be offered and can be applied as extra saving to the voyage fare. Business class upgrades are available in selected destinations. | ³ Depending on Silversea's air programme flight schedule. | Find detailed information at www.silversea.com/terms-and-conditions

THE SVALBARD ARCHIPELAGO

NORWAY'S MAGICAL LANDS AT SEA, INCLUDING SPITSBERGEN



Polar bear, Svalbard

Embark on an extraordinary voyage to witness Europe's last great wilderness. A frozen wonderland of majestic mountains, icy deserts, untouched tundra and vast glaciers inhabited mainly by wildlife including the King of the Arctic: the polar bear.

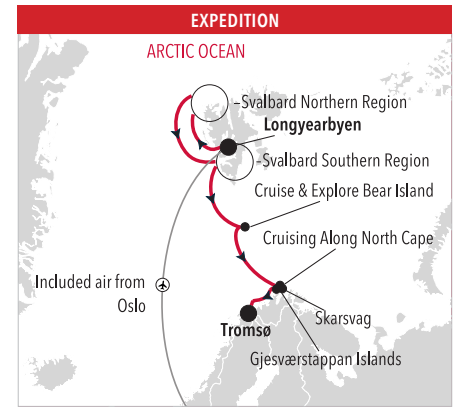
SAMPLE INTINERARY

LONGYEARBYEN TO TROMSØ

Sample departure **26 JUN 2024**

Duration **9 Days**

Silver Wind

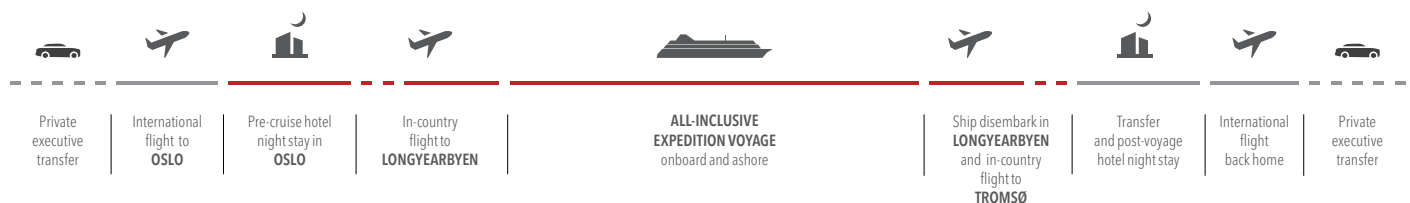


EXPEDITION			
DATE		ARRIVE	DEPART
	*EXECUTIVE TRANSFER AND INTERNATIONAL FLIGHT		
25 JUN 2024	PRE-CRUISE HOTEL NIGHT STAY IN OSLO		
26 JUN 2024	CHARTERED FLIGHT TO LONGYEARBYEN		
26 JUN 2024	LONGYEARBYEN		16:00
27 JUN 2024	SVAlBARD NORTHERN REGION		
28 JUN 2024	SVAlBARD NORTHERN REGION		
29 JUN 2024	SVAlBARD NORTHERN REGION		
30 JUN 2024	SVAlBARD SOUTHERN REGION		
01 JUL 2024	SVAlBARD SOUTHERN REGION		
02 JUL 2024	SVAlBARD SOUTHERN REGION		
03 JUL 2024	CRUISE/EXPLORE BEAR ISLAND	6:30	13:00
04 JUL 2024	SKARSVAG (NORDKAPP)	6:00	11:30
04 JUL 2024	CRUISING ALONG NORTH CAPE		
04 JUL 2024	GJESVAERSTAPPAN ISLANDS	14:00	19:00
05 JUL 2024	TROMSØ	8:00	
05 JUL 2024	INTERNATIONAL FLIGHT		

(*) Based on Silversea Air Programme

YOUR ALL-INCLUSIVE JOURNEY

— Port-to-Port Fare Journey — Door-to-Door Fare Journey



SVALBARD AND ICELAND

THE FIERY SIDE OF THE ARCTIC



Grundarfjordur's beautiful landmark Kirkjufell, Iceland

Set sail for the land of fire and ice as you spend 12 to 14 full days – depending on your selected expedition – exploring the rugged shores, rich natural habitats and Arctic deserts of Iceland and the Norwegian region of Svalbard. An area steeped in mysticism and deep traditions, you'll discover a different side of the Arctic, with plenty of surprises waiting for you along the way.

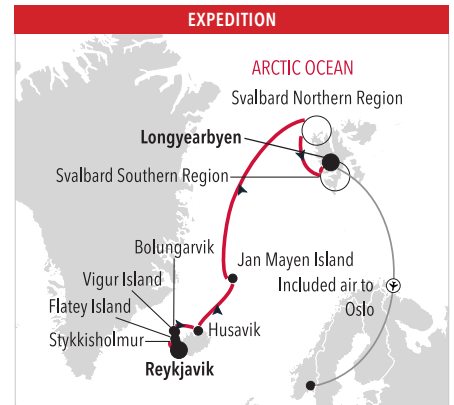
SAMPLE INTINERARY

REYKJAVIK TO LONGYEARBYEN

Expedition start **14 JUN 2024**

Duration **12 Days**

Silver Wind



EXPEDITION			
DAY BY DAY			
DATE		ARRIVE	DEPART
*EXECUTIVE TRANSFER AND INTERNATIONAL FLIGHT			
14 JUN 2024	REYKJAVIK		19:00
15 JUN 2024	STYKKISHOLMUR	6:30	12:00
15 JUN 2024	FLATEY ISLAND	14:30	18:30
16 JUN 2024	BOLUNGARVIK	6:30	12:30
16 JUN 2024	VIGUR ISLAND	14:30	20:30
17 JUN 2024	HUSAVIK	10:00	23:00
18 JUN 2024	DAY AT SEA		
19 JUN 2024	JAN MAYEN	6:00	12:00
20 JUN 2024	DAY AT SEA	5:00	5:00
21 JUN 2024	SVAlBARD NORTHERN REGION		
22 JUN 2024	SVAlBARD NORTHERN REGION		
23 JUN 2024	SVAlBARD NORTHERN REGION		
24 JUN 2024	SVAlBARD SOUTHERN REGION		
25 JUN 2024	SVAlBARD SOUTHERN REGION		
26 JUN 2024	LONGYEARBYEN	7:00	
26 JUN 2024	CHARTERED FLIGHT TO OSLO		
26 JUN 2024	POST-CRUISE HOTEL NIGHT STAY IN OSLO		
*INTERNATIONAL FLIGHT			

(*) Based on Silversea Air Programme

YOUR ALL-INCLUSIVE JOURNEY

— Port-to-Port Fare Journey — Door-to-Door Fare Journey



Private executive transfer | International flight to REYKJAVIK

ALL-INCLUSIVE EXPEDITION VOYAGE onboard and ashore

Ship disembark in LONGYEARBYEN

Transfer and post-voyage hotel night stay in OSLO

International flight back home

Private executive transfer

GREENLAND

ISLANDS OF COLOUR



Narsarsuaq, Greenland

Step into a colourful canvass of other-worldly scenery, from turquoise-tinted ice sheets and deep blue sea hues to brightly painted wooden villages. Learn about the history of these lands and get to know Inuit culture on a deeper, more authentic level.

SAMPLE INTINERARY

REYKJAVIK TO KANGERLUSSUAQ

Expedition start **11 AUG 2024**

Duration **12 Days**

Silver Wind



DAY BY DAY

DATE		ARRIVE	DEPART
*EXECUTIVE TRANSFER AND INTERNATIONAL FLIGHT			
11 AUG 2024	REYKJAVIK		19:00
12 AUG 2024	DAY AT SEA		
13 AUG 2024	SKJOLDUNGEN	9:00	17:00
14 AUG 2024	CRUISE PRINCE CHRISTIAN SOUND, GREENLAND		
14 AUG 2024	AAPPILATTOQ	13:30	21:00
15 AUG 2024	DAY AT SEA		
16 AUG 2024	NUUK (GODTHAB)	6:00	18:00
17 AUG 2024	EVIGHEDSEJORD	6:00	6:00
17 AUG 2024	EVIGHEDS GLACIER	8:30	12:30
17 AUG 2024	KANGAAMIUT	15:30	19:00
18 AUG 2024	SISIMIUT	7:00	18:00
19 AUG 2024	ILULISSAT	9:00	21:00
20 AUG 2024	EQIP SERMIA GLACIER, ILULISSAT	4:30	10:00
20 AUG 2024	SAQQAQ	15:15	20:30
21 AUG 2024	QEQERTARSUAQ	7:00	13:00
22 AUG 2024	MANIITSOQ	8:30	15:00
23 AUG 2024	KANGERLUSSUAQ	5:00	
23 AUG 2024	CHARTERED FLIGHT TO MONTREAL		
23 AUG 2024	POST-CRUISE HOTEL NIGHT STAY IN MONTREAL		
*INTERNATIONAL FLIGHT			

(*) Based on Silversea Air Programme

YOUR ALL-INCLUSIVE JOURNEY

— Port-to-Port Fare Journey — Door-to-Door Fare Journey



Private executive transfer



International flight to REYKJAVIK



ALL-INCLUSIVE EXPEDITION VOYAGE onboard and ashore



Ship disembark in KANGERLUSSUAQ and Charter flight to MONTREAL



Post-voyage hotel night stay in MONTREAL



International flight back home



Private executive transfer

HUDSON BAY

UNCOVER THIS UNIQUELY DIVERSE ARCTIC DESTINATION



Frozen Channel at the northern edge of Hudson Bay near the Arctic Circle

Embark on a journey to explore the wonders of Walrus, Marble, and Southampton Islands, including Coral Harbour, with chances to see walrus, reindeer and more. Delve into the heart of Inuit culture with a visit to Kinngait (Cape Dorset) with artworks carved from marble and salt stone.

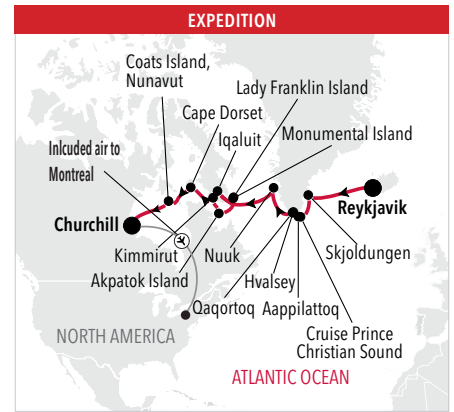
SAMPLE INTINERARY

REYKJAVIK TO CHURCHILL

Expedition start **29 JUN 2024**

Duration **16 Days**

Silver Endeavour



DAY BY DAY

DATE		ARRIVE	DEPART
*EXECUTIVE TRANSFER AND INTERNATIONAL FLIGHT			
29 JUN 2024	REYKJAVIK		19:00
30 JUN 2024	DAY AT SEA		
01 JUL 2024	SKJOLDUNGEN	9:00	16:00
02 JUL 2024	CRUISE PRINCE CHRISTIAN SOUND, GREENLAND		
02 JUL 2024	AAPPILATTOQ	13:30	21:00
03 JUL 2024	QAQORTOQ (JULIANEHÁB)	7:00	13:00
03 JUL 2024	HVALSEY	15:30	22:00
04 JUL 2024	DAY AT SEA		
05 JUL 2024	NUUK (GODTHAB)	6:30	20:00
06 JUL 2024	DAY AT SEA		
07 JUL 2024	IQALUIT, NUNAVUT	7:30	13:30
08 JUL 2024	LADY FRANKLIN ISLAND, NUNAVUT	6:00	12:00
08 JUL 2024	MONUMENTAL ISLAND, NUNAVUT	13:30	18:00
09 JUL 2024	AKPATOK ISLAND, NUNAVUT	7:00	20:00
10 JUL 2024	KIMMIRUT (LAKE HARBOUR)	7:00	12:30
11 JUL 2024	CAPE DORSET, BAFFIN ISLAND	7:30	18:00
12 JUL 2024	COATS ISLAND, NUNAVUT	8:00	18:00
12 JUL 2024	COATS ISLAND, NUNAVUT	8:00	18:00
13 JUL 2024	DAY AT SEA		
14 JUL 2024	CHURCHILL, MANITOBA	6:30	
15 JUL 2024	CHURCHILL, MANITOBA		
15 JUL 2024	CHARTERED FLIGHT TO MONTREAL		
*INTERNATIONAL FLIGHT			

YOUR ALL-INCLUSIVE JOURNEY

— Port-to-Port Fare Journey — Door-to-Door Fare Journey



Private executive transfer

International flight to **REYKJAVIK**

ALL-INCLUSIVE EXPEDITION VOYAGE onboard and ashore

Ship disembark in **CHURCHILL** and charter flight to **MONTREAL**

Post-voyage hotel night stay in **MONTREAL**

International flight back home

Private executive transfer

CANADA AND GREENLAND

AN UNSPOILT NATURAL PARADISE AND THE WORLD'S LARGEST ISLAND



Arctic sunset near Pond Inlet, Canada.

Go all the way north to Greenland, the world's largest island and an autonomous territory within the Danish Realm. Glide along shores of white and mountains of blue-green ice, as you encounter the unique wildlife of this region. Witness and learn all about time-honoured Inuit traditions in the northernmost parts of Canada and Nunavut, visit colourful villages with brightly-painted wooden cottages in Greenland, and explore incredible natural wonders across the Canadian Arctic.

YOUR ALL-INCLUSIVE JOURNEY

— Port-to-Port Fare Journey — Door-to-Door Fare Journey



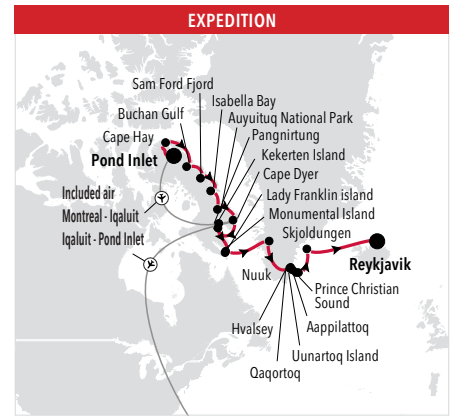
SAMPLE INTINERARY

POND INLET TO REYKJAVIK

Expedition start **18 AUG 2024**

Duration **16 Days**

Silver Endeavour



DAY BY DAY

DATE	ARRIVE	DEPART
*EXECUTIVE TRANSFER AND INTERNATIONAL FLIGHT		
16 AUG 2024	PRE-CRUISE HOTEL NIGHT STAY IN MONTREAL	
17 AUG 2024	CHARTER FLIGHT TO IQALUIT	
17 AUG 2024	PRE-CRUISE HOTEL NIGHT STAY IN IQALUIT	
18 AUG 2024	POND INLET, NUNAVUT 20:00	
19 AUG 2024	CAPE HAY, BYLOT ISLAND 6:30	14:00
20 AUG 2024	BUCHAN GULF 7:00	18:30
21 AUG 2024	DAY AT SEA	
22 AUG 2024	AUYUITUQ NATIONAL PARK	
23 AUG 2024	CAPE DYER, NUNAVUT 7:00	11:30
24 AUG 2024	PANGNIRTUNG, NUNAVUT 6:00	12:00
24 AUG 2024	KEKERTEN ISLAND, NUNAVUT 14:30	19:30
25 AUG 2024	MONUMENTAL ISLAND, NUNAVUT 9:30	14:00
25 AUG 2024	LADY FRANKLIN ISLAND, NUNAVUT 15:45	20:30
26 AUG 2024	LOWER SAVAGE ISLANDS 6:00	12:00
27 AUG 2024	DAY AT SEA	
28 AUG 2024	NUUK (GODTHAB) 6:00	20:00
29 AUG 2024	HVALSEY 5:30	12:00
30 AUG 2024	QAQORTOQ (JULIANEHÅB) 8:00	18:00
30 AUG 2024	UUNARTOQ ISLAND 16:00	23:00
31 AUG 2024	AAPPILATTOQ 6:30	12:00
31 AUG 2024	CRUISE PRINCE CHRISTIAN SOUND, GREENLAND 17:00	17:00
01 SEP 2024	SKJOLDUNGEN 9:30	15:00
02 SEP 2024	DAY AT SEA	
03 SEP 2024	REYKJAVIK 6:00	
*INTERNATIONAL FLIGHT		

(*) Based on Silversea Air Programme

Silver Wind 274 GUESTS

DATE | DAYS | SUB-REGION | PORTS

THE ARCTIC

2024

14 Jun	15	Svalbard & Iceland	REYKJAVIK > Stykkisholmur > Flatey Island > Bolungarvik > Vigur Island > Husavik > Day at Sea > Jan Mayen > Day at Sea > Svalbard Northern Region (3 days) > Svalbard Southern Region (3 days) > LONGYEARBYEN
26 Jun	13	Svalbard	LONGYEARBYEN > Svalbard Northern region (3 days) > Svalbard Southern Region (3 days) > Cruise/Explore Bear Island > Skarsvag (Nordkapp) > Cruising Along North Cape > Gjesvaerstappan Islands > TROMSØ
5 Jul	10	Svalbard	TROMSØ > Gjesvaerstappan Islands > Cruising Along North Cape > Skarsvag (Nordkapp) > Cruise/Explore Bear Island > Svalbard Southern Region (3 days) > Svalbard Northern region (3 days) > LONGYEARBYEN
14 Jul	10	Svalbard & Iceland	LONGYEARBYEN > Svalbard Northern region (3 days) > Svalbard Southern Region (2 days) > Day at Sea > Jan Mayen > Day at Sea > Siglufjordur > Vigur Island > Flatey Island > Stykkisholmur > REYKJAVIK
11 Aug	11	Greenland	REYKJAVIK > Day at Sea > Skjoldungen > Cruise Prince Christian Sound > Aappilattoq > Day at Sea > Nuuk (Godthab) > Evighedsfjord > Evigheds Glacier > Kangaamiut > Sisimiut > Ilulissat > Eqip Sermia Glacier > Saqqaq > Qeqertarsuaq > Maniitsoq > KANGERLUSSUAQ
23 Aug	13	Northeast Greenland	KANGERLUSSUAQ > Kangaamiut > Evighedsfjord > Nuuk (Godthab) > Sisimiut > Ilulissat > Day at Sea > Pond Inlet > Dundas Harbour > Radstock Bay > Beechey Island > Resolute > Cruise Peel Sound > Gjoa Haven > Jenny Lind Island > Cambridge Bay > Cruise Dease Strait > Cruise Amundsen Trough > Sachs Harbour > Smoking Hills > Cruise Beaufort Sea > Herschel Island > 2 Days at Sea > Point Hope > Day at Sea > NOME
16 Sep	25	Northeast Greenland	NOME > St Matthew Island > St Paul Island > Day at Sea > Kiska Harbor > Tanaga > Atka Island > Dutch Harbor > Unga Spit > 2 Days at Sea > Cruise Hubbard Glacier > Elfin Cove > Cruise Point Adolphus > Sitka > Behm Canal > Rudyerd Bay > Metlakatla > Day at Sea > VANCOUVER

Silver Endeavour 220 GUESTS

DATE | DAYS | SUB-REGION | PORTS

THE ARCTIC

2024 - 25

1 Jun 24	15	Svalbard & Iceland	REYKJAVIK > Stykkisholmur > Flatey Island > Vigur Island > Bolungarvik > Husavik > Day at Sea > Jan Mayen > Day at Sea > Svalbard Northern Region (3 days) > Svalbard Southern Region (2 days) > Cruise/Explore Bear Island > Gjesvaerstappan Islands > Cruising Along North Cape > Skarsvag (Nordkapp) > TROMSØ
15 Jun 24	15	Svalbard & Iceland	TROMSØ > Gjesvaerstappan Islands > Cruising Along North Cape > Skarsvag (Nordkapp) > Cruise/Explore Bear Island > Svalbard Southern Region (2 days) > Svalbard Northern region (3 days) > Day at Sea > Jan Mayen > Day at Sea > Husavik > Bolungarvik > Vigur Island > Flatey Island > Stykkisholmur > REYKJAVIK
29 Jun 24	15	Hudson Bay	REYKJAVIK > Day at Sea > Skjoldungen > Cruise Prince Christian Sound > Aappilattoq > Qaqortoq (Julianehåb) > Hvalsey > Day at Sea > Nuuk (Godthab) > Day at Sea > Iqaluit > Lady Franklin Island > Monumental Island > Akpatok Island > Kimmirut (Lake Harbour) > Cape Dorset > Coats Island > Day at Sea > CHURCHILL
15 Jul 24	17	Hudson Bay	CHURCHILL > Walrus Island > Marble Island > Coral Harbour > Digges Island > Cape Dorset > Kimmirut (Lake Harbour) > Akpatok Island > Lower Savage Islands > Lady Franklin Island > Monumental Island > Day at Sea > Nuuk (Godthab) > Evighedsfjord > Evigheds Glacier > Kangaamiut > Sisimiut > KANGERLUSSUAQ
29 Jul 24	15	Greenland	KANGERLUSSUAQ > Kangaamiut > Evighedsfjord > Nuuk (Godthab) > Sisimiut > Ilulissat > Eqip Sermia Glacier > Saqqaq > Uumannaq Fjord > Expedition Upernavik Fjord > Upernavik > Kraulshavn > Cape York > POND INLET
8 Aug 24	11	Canada & Greenland	POND INLET > Cape Hay > Beechey Island > Radstock Bay > Crocker Bay > Dundas Harbour > Grise Fjord > Markison Fjord > Cruise Alexandra Fjord > Cape Constitution > Qaanaaq (Thule) > Cape York > POND INLET
18 Aug 24	11	Canada & Greenland	POND INLET > Cape Hay > Buchan Gulf > Day at Sea > Auyuituq National Park > Cape Dyer > Pangnirtung > Kekerten Island > Monumental Island > Lady Franklin Island > Lower Savage Islands > Day at Sea > Nuuk (Godthab) > Hvalsey > Qaqortoq (Julianehåb) > Uunartoq Island > Aappilattoq > Cruise Prince Christian Sound > Skjoldungen > Day at Sea > REYKJAVIK
3 Sep 24	17	Northeast Greenland	REYKJAVIK > Day at Sea > Ittoqqortoormiit > Scoresby Sund (3 days) > Kejser Franz Joseph Fjord (4 days) > Kong Oscar Fjord (4 days) > Day at Sea > Stykkisholmur > Flatey Island > REYKJAVIK
19 Sep 24	17	Greenland	REYKJAVIK > Day at Sea > Tasiilaq > Skjoldungen > Lindenow Fjord > Cruise Prince Christian Sound > Aappilattoq > Nanortalik > Uunartoq Island > Qaqortoq (Julianehåb) > Hvalsey > 2 Days at Sea > St Anthony > L'Anse Aux Meadows > Woody Point > Iles-de-la-Madeleine > Sable Island > Yarmouth > Cape Cod Canal Transi > NEW YORK
25 May 25	13	Svalbard	LEITH (EDINBURGH) > Day at Sea > Papa Stour > Foula > Mousa > Isle of Noss > Ålesund > Island of Runde > Vega Archipelago > Norfjord and Melfjord > Leknes > Tromsø > Gjesvaerstappan Islands > Cruising Along North Cape > Skarsvag (Nordkapp) > Cruise/Explore Bear Island > Day at Sea > Svalbard Southern Region (2 days) > Svalbard Northern region (2 days) > LONGYEARBYEN
12 Jun 25	19	Svalbard	LONGYEARBYEN > Svalbard Northern region (3 days) > Svalbard Southern Region (3 days) > Svalbard Northern Region > LONGYEARBYEN
19 Jun 25	8	Svalbard	LONGYEARBYEN > Svalbard Northern region (3 days) > Svalbard Southern Region (3 days) > LONGYEARBYEN
26 Jun 25	8	Svalbard & Iceland	LONGYEARBYEN > Svalbard Northern region (2 days) > Svalbard Southern Region (3 days) > Day at Sea > Jan Mayen > Day at Sea > Akureyri > Bolungarvik > Vigur Island > Dynjandi > Arnarfjörður > Flatey Island > Stykkisholmur > REYKJAVIK
9 Jul 25	14	Hudson Bay	REYKJAVIK > Day at Sea > Cruise Prince Christian Sound > Qaqortoq (Julianehåb) > Hvalsey > Paamiut > Nuuk (Godthab) > Maniitsoq > Sermilinnuaq > Day at Sea > Iqaluit > Lady Franklin Island > Monumental Island > Akpatok Island > Kimmirut (Lake Harbour) > Cape Dorset > Coats Island > Day at Sea > CHURCHILL
25 Jul 25	17	Hudson Bay	CHURCHILL > Walrus Island > Marble Island > Coral Harbour > Digges Island > Cape Dorset > Akpatok Island > Lower Savage Islands > Monumental Island > Lady Franklin Island > Leopold Island > Padloping Island > Auyuituq National Park > Day at Sea > Sisimiut > Evighedsfjord > Kangaamiut > NUUK (GODTHAB)
9 Aug 25	16	Canada & Greenland	NUUK (GODTHAB) > Day at Sea > Iqaluit > Lower Savage Islands > Monumental Island > Lady Franklin Island > Day at Sea > Auyuituq National Park > Isabella Bay > Sam Ford Fjord > Buchan Gulf > Fechem Bay > Day at Sea > Uumannaq > Ilulissat > Sisimiut > Evighedsfjord > Kangaamiut > NUUK (GODTHAB)
24 Aug 25	16	Northwest Passage	NUUK (GODTHAB) > Sermilinnuaq > Maniitsoq > Evighedsfjord > Evigheds Glacier > Sisimiut > Ilulissat > Uumanaq Fjord > Day at Sea > Pond Inlet > Dundas Harbour > Radstock Bay > Beechey Island > Cruise Peel Sound > Gjoa Haven > Jenny Lind Island > Cambridge Bay > Edinburgh Island > Ulukhaktok > Smoking Hills > Cruise Beaufort Sea > Herschel Island > 2 Days at Sea > Point Hope > Day at Sea > NOME